



Student Affiliate Theory Test

Apply **label** here or clearly **print** requested information.

Name _____
 Last Name, First Name. Please print.

ALPHA School Grade _____ Date _____
 CODE _____

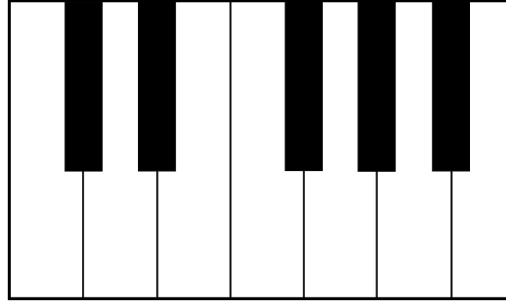
Notice: Do NOT make any extra marks or comments on the test. Points may be deducted.

Points

1. Print the following **six** letter names on the correct keys.
 One letter is missing, so **one white key will be blank**

12

Use only these letters:
C F A E D G



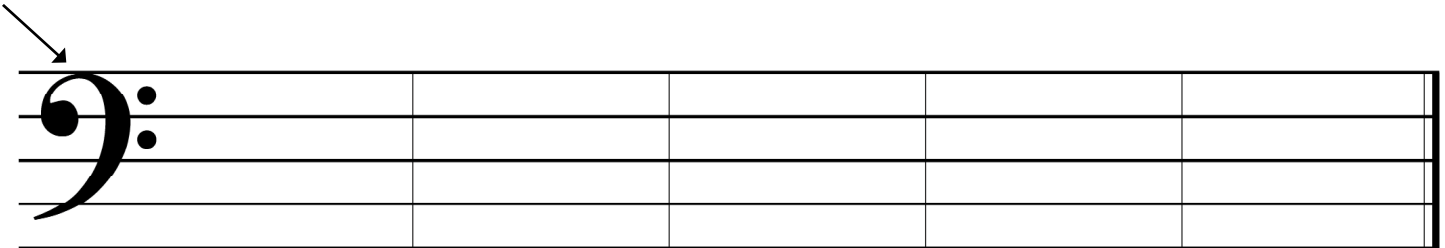
2. Beginning with the letter **A** (already printed for you), write the music alphabet going **up two times**.

6

A _____ G

3. Using **whole notes**, draw the note above each given letter.
 Look at the clef sign.

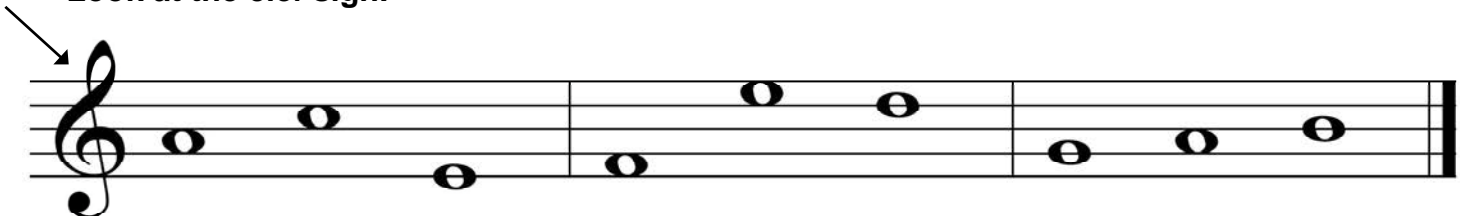
5



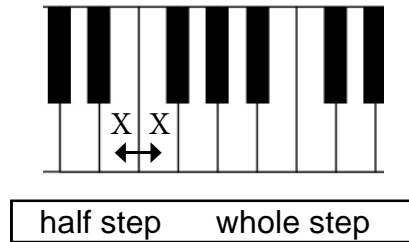
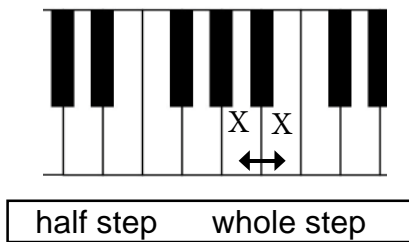
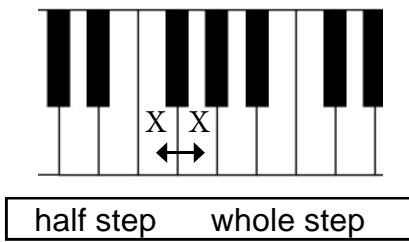
D F A G B

4. Print the **letter name** of each note on the line below the note. Each measure will spell a word.
 Look at the clef sign.

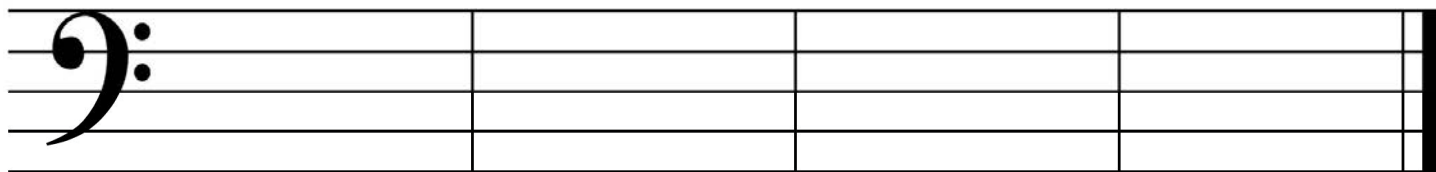
9



5. In the box below each keyboard, circle either **half step** or **whole step** to show the distance between the two white keys marked with X's and an arrow. 3



6. In each measure below, draw the note which is named below the measure. 8
→ Remember the stem rules.






Dotted Half Note

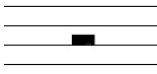
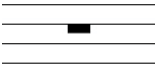

Quarter Note

Half Note

Whole Note

7. Write the number of beats each note or rest gets in $\frac{4}{4}$ time. 12

 = _____ beat(s)  = _____ beat(s)  = _____ beat(s)

 = _____ beat(s)  = _____ beat(s)  = _____ beat(s)

8. Draw **bar lines** where they are needed on the staff below. **Look at the time signature.** 6



9. Write the numbers below **each** note and **each** rest as you would say them as you would count aloud when tapping the following rhythm. **Look at the time signature.** 5



Name _____
 Last Name, First Name. Please print.

10. Circle the correct answer 2nd (step) or 3rd (skip) below each pair of notes.

6

2nd 2nd 2nd 2nd 2nd 2nd
 3rd 3rd 3rd 3rd 3rd 3rd

11. On the music below, circle the **measure** with notes that move **only by 3rds**.

1

12. Circle the correct music symbol for each name given.

12

Staff			forte	<i>p</i>	<i>f</i>
Sharp			Time Signature		
Quarter Note			Quarter Rest		
Bar Line			Flat		
Half Rest			Treble Clef		
Bass Clef			Measure		

Practice Only - Not Official Test

Page 4 Whitlock Level 2 NEW SYLLABUS SAMPLE

EAR TRAINING

13. You will hear five groups of notes.
If the notes move **up**, circle the word **up**. If the notes move **down**, circle the word **down**.

5

1.	2.	3.	4.	5.
up down	up down	up down	up down	up down


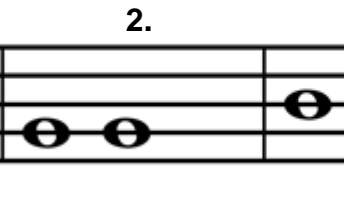
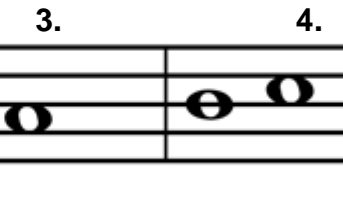
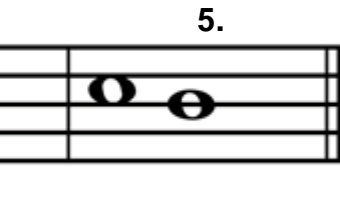
14. You will hear five different rhythmic examples.
If the rhythm that is played sounds the **same** as the written notes, circle the word **same**.
If they sound **different** from the written rhythm, circle the word **different**.

5

1.	2.	3.	4.	5.
				
same different	same different	same different	same different	same different

15. You will hear five groups of notes. There are three notes in each group.
The first two notes are written on the staff.
After you hear each group, **write the missing third note** in the measure.
The third note will **repeat** the second note, **go up by a step**, or **down by a step**.

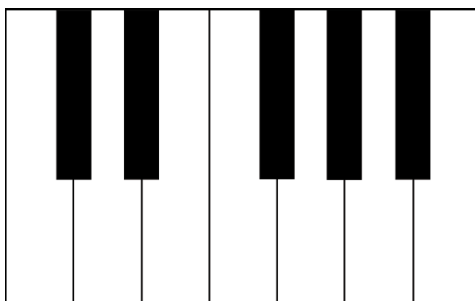
5

1.	2.	3.	4.	5.
				

BONUS QUESTION

1

On the keyboard below, write the letter names of the keys in the C MAJOR 5-finger pattern.





There are **NO** audio files

available for this sample test.

Texas Music Teachers Association

Student Affiliate Theory Test Ear Training Instructions

Whitlock Level 2

For each question: Pause the TMTA Ear Training CD as needed to allow students time to write their answers.

Question 13: Recognition of Ascending and Descending Tonal Patterns CD Track 4

1. Read the test question aloud and answer any questions.
2. Explain that each group will be played twice.
3. Give two examples, different from the test examples, before beginning the question.
4. Play the first test example. Pause. Say "again" and repeat the example.
5. Continue the same way for all examples.
6. Repeat all the examples once for a final check, pausing briefly between each example.

MM: = 60

1. 2. 3. 4. 5.

Question 14: Recognition of Rhythmic Patterns CD Track 5

1. Read the test question aloud and answer any questions.
2. Explain that each rhythmic pattern will be played twice.
3. Establish the tempo and beat by tapping and counting two measures aloud before playing each example. **Do not tap or count while playing.**
4. Give two examples, different from the test examples, before beginning the question.
5. Play the first test example. Pause. Say "again" and repeat the example.
6. Continue the same way for all examples.
7. Repeat all the examples once for a final check, pausing briefly between each example.

MM: = 60

1. 2. 3. 4. 5.

Question 15: Filling in the Missing Tones CD Track 6

1. Read the test question aloud and answer any questions.
2. Explain that the third note will repeat the second note or go up or down by a step.
3. Explain that each group will be played twice.
4. Give two examples, different from the test examples, before beginning the question.
5. Play the first test example. Pause. Say "again" and repeat the example.
6. Continue the same way for all examples.
7. Repeat all the examples once for a final check, pausing briefly between each example.

MM: = 60

1. 2. 3. 4. 5.

REMIND STUDENTS TO COMPLETE THE BONUS QUESTION AT THE BOTTOM OF THE TEST.